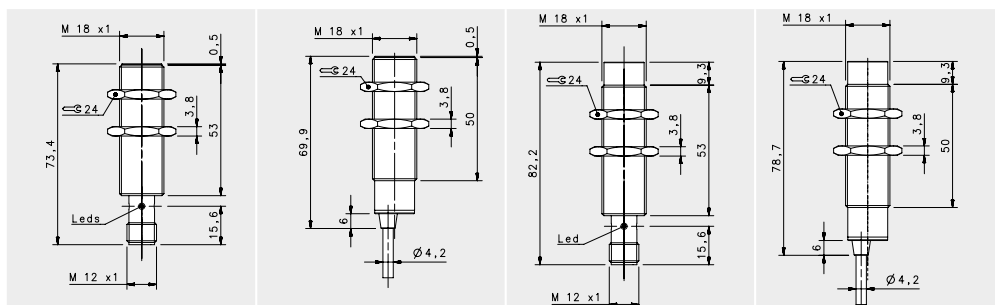


BASIC M18



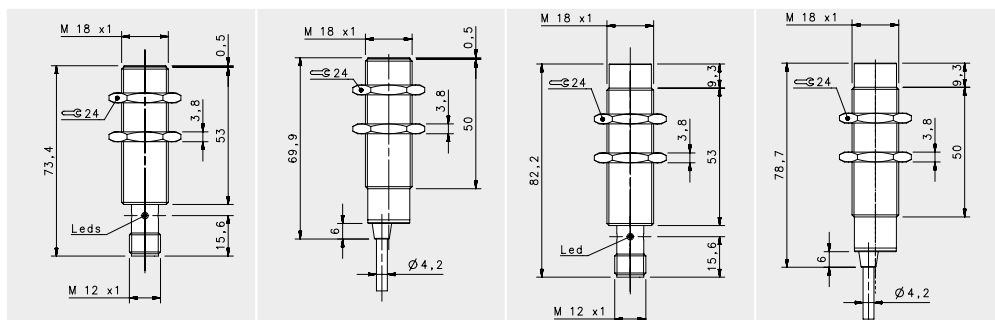
STANDARD

NOMINAL SWITCHING DISTANCE

| | | | | FLUSH | | NON FLUSH | |
|-----------------|-------------------|----------|-----------|--------------------------|--------------------------|--------------------------|--------------------------|
| | | | | M12 conn 5 mm | cable 5 mm | M12 conn 8 mm | cable 8 mm |
| 10-30 Vdc | PNP/NPN NO-NC | 4 wires | order No. | IS-18-A0-S2 95B064260 | IS-18-A0-03 95B064230 | IS-18-C0-S2 95B064280 | IS-18-C0-03 95B064240 |
| 10-30 Vdc | PNP NO | 3 wires | order No. | IS-18-A1-S2 95B061351 | IS-18-A1-03 95B061341 | IS-18-C1-S2 95B061751 | IS-18-C1-03 95B061741 |
| 10-30 Vdc | PNP NC | 3 wires | order No. | IS-18-A2-S2 95B061371 | IS-18-A2-03 95B061361 | IS-18-C2-S2 95B061771 | IS-18-C2-03 95B061761 |
| 10-30 Vdc | NPN NO | 3 wires | order No. | IS-18-A3-S2 95B061311 | IS-18-A3-03 95B061301 | IS-18-C3-S2 95B061711 | IS-18-C3-03 95B061701 |
| 10-30 Vdc | NPN NC | 3 wires | order No. | IS-18-A4-S2 95B061331 | IS-18-A4-03 95B061321 | IS-18-C4-S2 95B061731 | IS-18-C4-03 95B061721 |
| 10-30 Vdc | PNP NO-NC | 4 wires | order No. | --- | --- | --- | --- |
| 10-30 Vdc | NPN NO-NC | 4 wires | order No. | --- | --- | --- | --- |
| 10-30 Vdc | NO-NC | 2 wires | order No. | IS-18-A9-S2 95B063941 | IS-18-A9-03 95B064300 | IS-18-C9-S2 95B064340 | IS-18-C9-03 95B064310 |
| 20-250 Vac/Vdc | NO | 2 wires | order No. | --- | --- | --- | --- |
| 20-250 Vac/Vdc | NC | 2 wires | order No. | --- | --- | --- | --- |
| 20-250 Vac | NO | 2/3wires | order No. | --- | --- | --- | --- |
| 10-30 Vdc | Analog 0-20 mA | 3 wires | order No. | --- | --- | --- | --- |
| NAMUR amplifier | NAMUR | 2 wires | order No. | --- | --- | --- | --- |

| | | | | |
|---------------------------|---|--|---|--|
| Nominal Voltage | 10-30 Vdc (-15/10%) | 10-30 Vdc (-15/10%) | 10-30 Vdc (-15/10%) | 10-30 Vdc (-15/10%) |
| Residual Ripple | < 10% | < 10% | < 10% | < 10% |
| Hysteresis | < 10% | < 10% | < 10% | < 10% |
| Max. Output Current | 200 mA | 200 mA | 200 mA | 200 mA |
| Min. Output Current | > 1,6 mA (2wires ver.) | > 1,6 mA (2wires ver.) | > 1,6 mA (2wires ver.) | > 1,6 mA (2wires ver.) |
| Residual Current | < 10 mA | < 10 mA | < 10 mA | < 10 mA |
| Voltage Drop | < 1,8V; < 6,5 V (2wires ver.) | < 1,8V; < 6,5 V (2wires ver.) | < 1,8V; < 6,5 V (2wires ver.) | < 1,8V; < 6,5 V (2wires ver.) |
| Operation Led | Yellow | Yellow | Yellow | Yellow |
| Switching Frequency | 1000 Hz/200 Hz (2 wires NO-NC) | 1000 Hz/200 Hz (2 wires NO-NC) | 1000 Hz/200 Hz (2 wires NO-NC) | 1000 Hz/200 Hz (2 wires NO-NC) |
| Start Up Delay | < 50 ms | < 50 ms | < 50 ms | < 50 ms |
| Repeatability | < 3% | < 3% | < 3% | < 3% |
| Short Circuit Protection | Present (self-resetting) | Present (self-resetting) | Present (self-resetting) | Present (self-resetting) |
| Electric Protection | Against polarity reversal inductive loads | Against polarity reversal inductive loads | Against polarity reversal inductive loads | Against polarity reversal inductive loads |
| Temperature Limit | (-25 ... +60 °C) | (-25 ... +60 °C) | (-25 ... +60 °C) | (-25 ... +60 °C) |
| Protection Degree | IP67 | IP67 | IP67 | IP67 |
| Cable Length | --- | 2 m | --- | 2 m |
| Cable Section | --- | 2 x 0,34 mm ² 3 x 0,14 mm ² 4 x 0,25 mm ² | --- | 2 x 0,34 mm ² 3 x 0,14 mm ² 4 x 0,25 mm ² |
| Housing Material | Nickel-plated brass | Nickel-plated brass | Nickel-plated brass | Nickel-plated brass |
| Active face | LCP | LCP | LCP | LCP |
| Tightening torque | 30Nm | 30Nm | 30Nm | 30Nm |
| Weight - Cable Output | --- | 145g | --- | 145g |
| Weight - Connector Output | 95g | --- | 95g | --- |

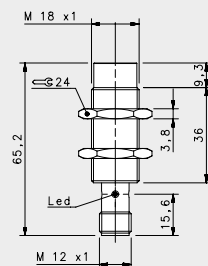
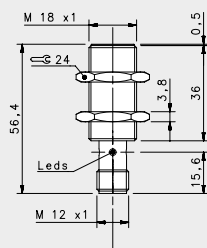
BASIC M18



STANDARD X2

| | | | | FLUSH | | NON FLUSH | |
|----------------------------|---|----------|-----------|--|---|---|--|
| | | | | M12 conn | cable | M12 conn | cable |
| NOMINAL SWITCHING DISTANCE | | | | 8 mm | | 14 mm | |
| 10-30 Vdc | PNP/NPN NO-NC | 4 wires | order No. | IS-18-E0-S2 95B067310 | IS-18-E0-03 95B067270 | IS-18-F0-S2 95B067330 | IS-18-F0-03 95B067290 |
| 10-30 Vdc | PNP NO | 3 wires | order No. | IS-18-E1-S2 95B067050 | IS-18-E1-03 95B067810 | IS-18-F1-S2 95B067040 | IS-18-F1-03 95B067880 |
| 10-30 Vdc | PNP NC | 3 wires | order No. | IS-18-E2-S2 95B067780 | IS-18-E2-03 95B067820 | IS-18-F2-S2 95B067850 | IS-18-F2-03 95B067890 |
| 10-30 Vdc | NPN NO | 3 wires | order No. | IS-18-E3-S2 95B067790 | IS-18-E3-03 95B067830 | IS-18-F3-S2 95B067860 | IS-18-F3-03 95B067900 |
| 10-30 Vdc | NPN NC | 3 wires | order No. | IS-18-E4-S2 95B067800 | IS-18-E4-03 95B067840 | IS-18-F4-S2 95B067870 | IS-18-F4-03 95B067910 |
| 10-30 Vdc | PNP NO-NC | 4 wires | order No. | --- | --- | --- | --- |
| 10-30 Vdc | NPN NO-NC | 4 wires | order No. | --- | --- | --- | --- |
| 10-30 Vdc | NO-NC | 2 wires | order No. | IS-18-E9-S2 95B067320 | IS-18-E9-03 95B067280 | IS-18-F9-S2 95B067340 | IS-18-F9-03 95B067300 |
| 20-250 Vac/Vdc | NO | 2 wires | order No. | --- | --- | --- | --- |
| 20-250 Vac/Vdc | NC | 2 wires | order No. | --- | --- | --- | --- |
| 20-250 Vac | NO | 2/3wires | order No. | --- | --- | --- | --- |
| 10-30 Vdc | Analog 0-20 mA | 3 wires | order No. | --- | --- | --- | --- |
| NAMUR amplifier | NAMUR | 2 wires | order No. | --- | --- | --- | --- |
| Nominal Voltage | 10-30 Vdc (-15/10%) | | | 10-30 Vdc (-15/10%) | 10-30 Vdc (-15/10%) | 10-30 Vdc (-15/10%) | 10-30 Vdc (-15/10%) |
| Residual Ripple | < 10% | | | < 10% | < 10% | < 10% | < 10% |
| Hysteresis | < 10% | | | < 10% | < 10% | < 10% | < 10% |
| Max. Output Current | 200 mA | | | 200 mA | 200 mA | 200 mA | 200 mA |
| Min. Output Current | --- | | | --- | --- | --- | --- |
| Residual Current | < 10 mA | | | < 10 mA | < 10 mA | < 10 mA | < 10 mA |
| Voltage Drop | < 1,2 V (I=100mA) | | | < 1,2 V (I=100mA) | < 1,2 V (I=100mA) | < 1,2 V (I=100mA) | < 1,2 V (I=100mA) |
| Operation Led | Yellow | | | Yellow | Yellow | Yellow | Yellow |
| Switching Frequency | 400 Hz | | | 400 Hz | 400 Hz | 100 Hz | 100 Hz |
| Start Up Delay | < 50 ms | | | < 50 ms | < 50 ms | < 50 ms | < 50 ms |
| Repeatability | < 3% | | | < 3% | < 3% | < 3% | < 3% |
| Short Circuit Protection | Present (self-resetting) | | | Present (self-resetting) | Present (self-resetting) | Present (self-resetting) | Present (self-resetting) |
| Electric Protection | Against polarity reversal inductive loads | | | Against polarity reversal inductive loads | Against polarity reversal inductive loads | Against polarity reversal inductive loads | Against polarity reversal inductive loads |
| Temperature Limit | (-25 ... +70 °C) | | | (-25 ... +70 °C) | (-25 ... +70 °C) | (-25 ... +70 °C) | (-25 ... +70 °C) |
| Protection Degree | IP67 | | | IP67 | IP67 | IP67 | IP67 |
| Cable Length | --- | | | --- | --- | --- | --- |
| Cable Section | --- | | | 2 x 0,34 mm ² 3 x 0,14 mm ² 4 x 0,25 mm ² | --- | --- | 2 x 0,34 mm ² 3 x 0,14 mm ² 4 x 0,25 mm ² |
| Housing Material | Nickel-plated brass | | | Nickel-plated brass | Nickel-plated brass | Nickel-plated brass | Nickel-plated brass |
| Active face | LCP | | | LCP | LCP | LCP | LCP |
| Tightening torque | 30Nm | | | 30Nm | 30Nm | 30Nm | 30Nm |
| Weight - Cable Output | --- | | | --- | --- | 145g | 145g |
| Weight - Connector Output | 95g | | | 95g | 95g | --- | --- |

STAINLESS STEEL M18

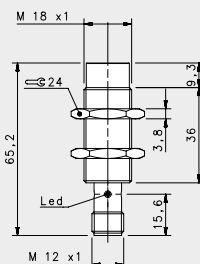
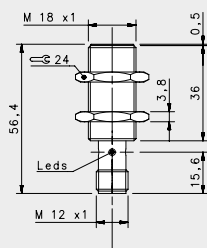


SHORT STAINLESS STEEL

NOMINAL SWITCHING DISTANCE

| | | | | FLUSH | NON FLUSH |
|-----------------|----------------|-----------|-----------|--------------------------|--------------------------|
| | | | | M12 conn | M12 conn |
| | | | | 5 mm | 8 mm |
| 10-30 Vdc | PNP/NPN NO-NC | 4 wires | order No. | --- | --- |
| 10-30 Vdc | PNP NO | 3 wires | order No. | IS-18-M1-S2 95B060320 | IS-18-N1-S2 95B060360 |
| 10-30 Vdc | PNP NC | 3 wires | order No. | IS-18-M2-S2 95B060330 | IS-18-N2-S2 95B060370 |
| 10-30 Vdc | NPN NO | 3 wires | order No. | IS-18-M3-S2 95B060340 | IS-18-N3-S2 95B060380 |
| 10-30 Vdc | NPN NC | 3 wires | order No. | IS-18-M4-S2 95B060350 | IS-18-N4-S2 95B060390 |
| 10-30 Vdc | PNP NO-NC | 4 wires | order No. | --- | --- |
| 10-30 Vdc | NPN NO-NC | 4 wires | order No. | --- | --- |
| 10-30 Vdc | NO-NC | 2 wires | order No. | --- | --- |
| 20-250 Vac/Vdc | NO | 2 wires | order No. | --- | --- |
| 20-250 Vac/Vdc | NC | 2 wires | order No. | --- | --- |
| 20-250 Vac | NO | 2/3 wires | order No. | --- | --- |
| 10-30 Vdc | Analog 0-20 mA | 3 wires | order No. | --- | --- |
| NAMUR amplifier | NAMUR | 2 wires | order No. | --- | --- |

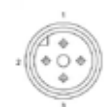
| | | |
|---------------------------|--|--|
| Nominal Voltage | 10-30 Vdc (-15/10%) | 10-30 Vdc (-15/10%) |
| Residual Ripple | < 10% | < 10% |
| Hysteresis | < 10% | < 10% |
| Max. Output Current | 200 mA | 200 mA |
| Min. Output Current | --- | --- |
| Residual Current | < 10 mA | < 10 mA |
| Voltage Drop | < 1,8 V (I=100mA) | < 1,8 V (I=100mA) |
| Operation Led | Yellow | Yellow |
| Switching Frequency | 1000 Hz | 1000 Hz |
| Start Up Delay | < 50 ms | < 50 ms |
| Repeatability | < 3% | < 3% |
| Short Circuit Protection | Present (self-resetting) | Present (self-resetting) |
| Electric Protection | Against polarity reversal inductive loads | Against polarity reversal inductive loads |
| Temperature Limit | (-25 ... +70 °C) | (-25 ... +70 °C) |
| Protection Degree | IP69K | IP69K |
| Cable Length | --- | --- |
| Cable Section | --- | --- |
| Housing Material | Stainless-Steel | Stainless-Steel |
| Active face | LCP | LCP |
| Tightening torque | 30Nm | 30Nm |
| Weight - Cable Output | --- | --- |
| Weight - Connector Output | 95g | 95g |



SHORT STAINLESS STEEL X2

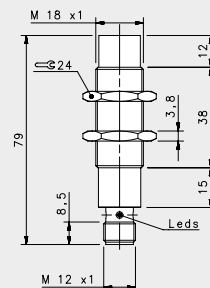
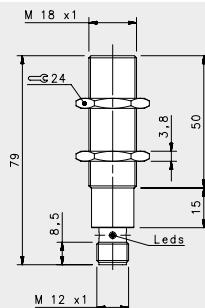
| FLUSH | NON FLUSH |
|---------------------------|---------------------------|
| M12 conn | M12 conn |
| 8 mm | 14 mm |
| --- | --- |
| --- | --- |
| IS-18-01-S2 | IS-18-P1-S2 |
| 95B060080 | 95B060120 |
| IS-18-02-S2 | IS-18-P2-S2 |
| 95B060090 | 95B060130 |
| IS-18-03-S2 | IS-18-P3-S2 |
| 95B060100 | 95B060140 |
| IS-18-04-S2 | IS-18-P4-S2 |
| 95B060110 | 95B060150 |
| --- | --- |
| --- | --- |
| --- | --- |
| --- | --- |
| --- | --- |
| --- | --- |
| --- | --- |
| --- | --- |
| --- | --- |
| --- | --- |
| --- | --- |
| --- | --- |
| --- | --- |
| --- | --- |
| --- | --- |
| 10-30 Vdc (-15/10%) | 10-30 Vdc (-15/10%) |
| < 10% | < 10% |
| < 10% | < 10% |
| 200 mA | 200 mA |
| --- | --- |
| < 10 mA | < 10 mA |
| < 1,2 V (I=100mA) | < 1,2 V (I=100mA) |
| Yellow | Yellow |
| 200 Hz | 200 Hz |
| < 75 ms | < 75 ms |
| < 3% | < 3% |
| Present (self-resetting) | Present (self-resetting) |
| Against polarity reversal | Against polarity reversal |
| inductive loads | inductive loads |
| (-25 ... +70 °C) | (-25 ... +70 °C) |
| IP69K | IP69K |
| --- | --- |
| --- | --- |
| Stainless-Steel | Stainless-Steel |
| LCP | LCP |
| 30Nm | 30Nm |
| --- | --- |
| 95g | 95g |

M12 3 pole



| CONTACTS CONFIGURATION | | | | |
|-------------------------|------------------|---|---|-------|
| Available (NO or NC) | Contacts numbers | | | |
| | 1 | 2 | 3 | 4 |
| | + | | — | NO/NC |

METAL FACE M18



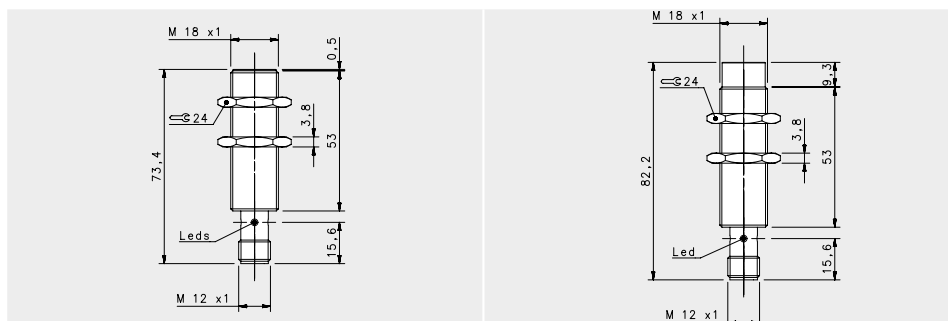
METAL FACE

NOMINAL SWITCHING DISTANCE

| | | | | FLUSH | NON FLUSH |
|-----------------|----------------|----------|-----------|--------------------------|--------------------------|
| | | | | M12 conn | M12 conn |
| | | | | 5 mm | 8 mm |
| 10-30 Vdc | PNP/NPN NO-NC | 4 wires | order No. | --- | --- |
| 10-30 Vdc | PNP NO | 3 wires | order No. | IS-18-I1-S2 95B065350 | IS-18-L1-S2 95B063881 |
| 10-30 Vdc | PNP NC | 3 wires | order No. | --- | --- |
| 10-30 Vdc | NPN NO | 3 wires | order No. | --- | --- |
| 10-30 Vdc | NPN NC | 3 wires | order No. | --- | --- |
| 10-30 Vdc | PNP NO-NC | 4 wires | order No. | --- | --- |
| 10-30 Vdc | NPN NO-NC | 4 wires | order No. | --- | --- |
| 10-30 Vdc | NO-NC | 2 wires | order No. | --- | --- |
| 20-250 Vac/Vdc | NO | 2 wires | order No. | --- | --- |
| 20-250 Vac/Vdc | NC | 2 wires | order No. | --- | --- |
| 20-250 Vac | NO | 2/3wires | order No. | --- | --- |
| 10-30 Vdc | Analog 0-20 mA | 3 wires | order No. | --- | --- |
| NAMUR amplifier | NAMUR | 2 wires | order No. | --- | --- |

| | | |
|---------------------------|---|---|
| Nominal Voltage | 10-30 Vdc | 10-30 Vdc |
| Residual Ripple | < 10% | < 10% |
| Hysteresis | < 15% | < 15% |
| Max. Output Current | 200 mA | 200 mA |
| Min. Output Current | > 1,6 mA | > 1,6 mA |
| Residual Current | < 0,01 mA | < 0,01 mA |
| Voltage Drop | < 1,5 V | < 1,5 V |
| Operation Led | Present | Present |
| Switching Frequency | 1000 Hz | 500 Hz |
| Start Up Delay | --- | --- |
| Repeatability | < 1% | < 1% |
| Short Circuit Protection | Present (self-resetting) | Present (self-resetting) |
| Electric Protection | Against polarity reversal inductive loads | Against polarity reversal inductive loads |
| Temperature Limit | (-25 ... +70 °C) | (-25 ... +70 °C) |
| Protection Degree | IP67 | IP67 |
| Cable Length | --- | --- |
| Cable Section | --- | --- |
| Housing Material | Stainless-Steel | Stainless-Steel |
| Active face | Stainless Steel AISI 303 | Stainless Steel AISI 303 |
| Tightening torque | 10Nm | 10Nm |
| Weight - Cable Output | --- | --- |
| Weight - Connector Output | 95g | 95g |

WELD FIELD IMMUNE M18



FIELD IMMUNE STAINLESS STEEL

FLUSH

M12 conn

5 mm

NON FLUSH

M12 conn

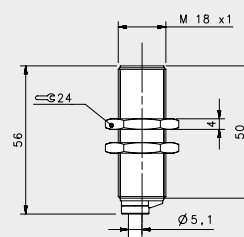
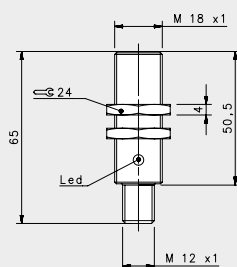
8 mm

NOMINAL SWITCHING DISTANCE

| 10-30 Vdc | PNP/NPN NO-NC | 4 wires | order No. | --- | --- | --- |
|-----------------|-------------------|-----------|-----------|---------------------------|---------------------------|-----|
| 10-30 Vdc | PNP NO | 3 wires | order No. | IS-F18-S1-S2 95B065380 | IS-F18-T1-S2 95B065390 | |
| 10-30 Vdc | PNP NC | 3 wires | order No. | --- | --- | |
| 10-30 Vdc | NPN NO | 3 wires | order No. | --- | --- | |
| 10-30 Vdc | NPN NC | 3 wires | order No. | --- | --- | |
| 10-30 Vdc | PNP NO-NC | 4 wires | order No. | --- | --- | |
| 10-30 Vdc | NPN NO-NC | 4 wires | order No. | --- | --- | |
| 10-30 Vdc | NO-NC | 2 wires | order No. | --- | --- | |
| 20-250 Vac/Vdc | NO | 2 wires | order No. | --- | --- | |
| 20-250 Vac/Vdc | NC | 2 wires | order No. | --- | --- | |
| 20-250 Vac | NO | 2/3 wires | order No. | --- | --- | |
| 10-30 Vdc | Analog 0-20 mA | 3 wires | order No. | --- | --- | |
| NAMUR amplifier | NAMUR | 2 wires | order No. | --- | --- | |

| | | |
|---------------------------|--|--|
| Nominal Voltage | 10-30 Vdc | 10-30 Vdc |
| Residual Ripple | < 10% | < 10% |
| Hysteresis | < 15% | < 15% |
| Max. Output Current | 200 mA | 200 mA |
| Min. Output Current | < 10mA | < 10mA |
| Residual Current | < 0,1 mA | < 0,1 mA |
| Voltage Drop | < 1,5V | < 1,5V |
| Operation Led | Present | Present |
| Switching Frequency | 1000 Hz | 500 Hz |
| Start Up Delay | < 0,2 ms | < 0,5 ms |
| Repeatability | < 1% | < 1% |
| Short Circuit Protection | Present (self-resetting) | Present (self-resetting) |
| Electric Protection | Against polarity reversal inductive loads | Against polarity reversal inductive loads |
| Temperature Limit | (-25 ... +70 °C) | (-25 ... +70 °C) |
| Protection Degree | IP67 | IP67 |
| Cable Length | --- | --- |
| Cable Section | --- | --- |
| Housing Material | Stainless-Steel | Stainless-Steel |
| Active face | PTFE | PTFE |
| Tightening torque | 30 Nm | 30 Nm |
| Weight - Cable Output | --- | --- |
| Weight - Connector Output | 94g | 91g |

INDUCTIVE AC M18



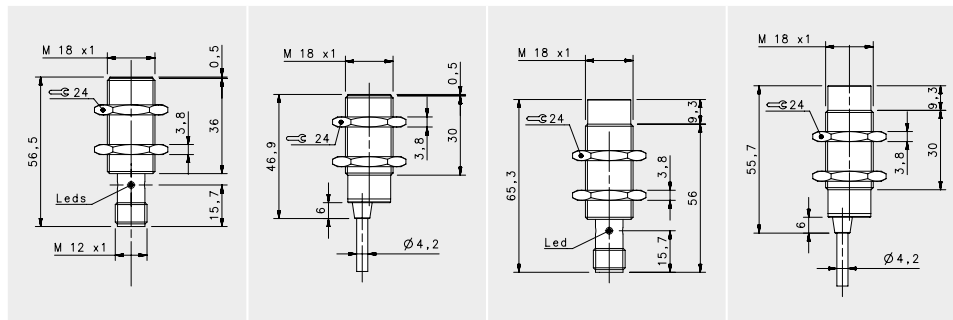
STANDARD VAC

FLUSH

| | | | | M12 conn | cable |
|-----------------|----------------|-----------|-----------|---------------------------|---------------------------|
| | | | | 5 mm | 5 mm |
| 10-30 Vdc | PNP/NPN NO-NC | 4 wires | order No. | --- | --- |
| 10-30 Vdc | PNP NO | 3 wires | order No. | --- | --- |
| 10-30 Vdc | PNP NC | 3 wires | order No. | --- | --- |
| 10-30 Vdc | NPN NO | 3 wires | order No. | --- | --- |
| 10-30 Vdc | NPN NC | 3 wires | order No. | --- | --- |
| 10-30 Vdc | PNP NO-NC | 4 wires | order No. | --- | --- |
| 10-30 Vdc | NPN NO-NC | 4 wires | order No. | --- | --- |
| 10-30 Vdc | NO-NC | 2 wires | order No. | --- | --- |
| 20-250 Vac/Vdc | NO | 2 wires | order No. | --- | --- |
| 20-250 Vac/Vdc | NC | 2 wires | order No. | --- | --- |
| 20-250 Vac | NO | 2/3 wires | order No. | IS-18-A15-S2 95B060780 | IS-18-A15-03 95B060770 |
| 10-30 Vdc | Analog 0-20 mA | 3 wires | order No. | --- | --- |
| NAMUR amplifier | NAMUR | 2 wires | order No. | --- | --- |

| | | |
|---------------------------|---|---|
| Nominal Voltage | 20+250 Vac (50,60 Hz) | 20+250 Vac (50,60 Hz) |
| Residual Ripple | < 10% | < 10% |
| Hysteresis | < 10% | < 10% |
| Max. Output Current | 500 mA, inrush:1,5A | 500 mA, inrush:1,5A |
| Min. Output Current | 20 mA | 20 mA |
| Residual Current | < 0,7 mA | < 0,7 mA |
| Voltage Drop | < 4 V (I=100mA) | < 4 V (I=100mA) |
| Operation Led | Yellow | Yellow |
| Switching Frequency | 25 Hz | 25 Hz |
| Start Up Delay | < 300 ms | < 300 ms |
| Repeatability | 5% | 5% |
| Short Circuit Protection | Present (self-resetting) | Present (self-resetting) |
| Electric Protection | Against polarity reversal inductive loads | Against polarity reversal inductive loads |
| Temperature Limit | (-25 ... +70 °C) | (-25 ... +70 °C) |
| Protection Degree | IP67 | IP67 |
| Cable Length | --- | 2 m |
| Cable Section | --- | 2 x 0,25 mm ² |
| Housing Material | Nickel-plated brass | Nickel-plated brass |
| Active face | PA 16 | PA 16 |
| Tightening torque | 40Nm | 40Nm |
| Weight - Cable Output | --- | 145g |
| Weight - Connector Output | 95g | --- |

NAMUR M18



NAMUR

| | | | | FLUSH | | NON FLUSH | |
|-----------------------------------|----------------|----------|-----------|---------------------------|---------------------------|---------------------------|---------------------------|
| | | | | M12 conn | cable | M12 conn | cable |
| | | | | 5mm | 5mm | 8mm | 8mm |
| NOMINAL SWITCHING DISTANCE | | | | | | | |
| 10-30 Vdc | PNP/NPN NO-NC | 4 wires | order No. | --- | --- | --- | --- |
| 10-30 Vdc | PNP NO | 3 wires | order No. | --- | --- | --- | --- |
| 10-30 Vdc | PNP NC | 3 wires | order No. | --- | --- | --- | --- |
| 10-30 Vdc | NPN NO | 3 wires | order No. | --- | --- | --- | --- |
| 10-30 Vdc | NPN NC | 3 wires | order No. | --- | --- | --- | --- |
| 10-30 Vdc | PNP NO-NC | 4 wires | order No. | --- | --- | --- | --- |
| 10-30 Vdc | NPN NO-NC | 4 wires | order No. | --- | --- | --- | --- |
| 10-30 Vdc | NO-NC | 2 wires | order No. | --- | --- | --- | --- |
| 20-250 Vac/Vdc | NO | 2 wires | order No. | --- | --- | --- | --- |
| 20-250 Vac/Vdc | NC | 2 wires | order No. | --- | --- | --- | --- |
| 20-250 Vac | NO | 2/3wires | order No. | --- | --- | --- | --- |
| 10-30 Vdc | Analog 0-20 mA | 3 wires | order No. | --- | --- | --- | --- |
| NAMUR amplifier | NAMUR | 2 wires | order No. | IS-18-A20-S2 95B064380 | IS-18-A20-03 95B064360 | IS-18-C20-S2 95B064390 | IS-18-C20-03 95B064370 |

| | | | | |
|---------------------------|---|---|---|---|
| Nominal Voltage | 7,7 + 9 V DC | 7,7 + 9 V DC | 7,7 + 9 V DC | 7,7 + 9 V DC |
| Residual Ripple | < 10% | < 10% | < 10% | < 10% |
| Hysteresis | < 10% | < 10% | < 10% | < 10% |
| Max. Output Current | < 3 mA (metal absent) | < 3 mA (metal absent) | < 3 mA (metal absent) | < 3 mA (metal absent) |
| Min. Output Current | < 1 mA (metal present) | < 1 mA (metal present) | < 1 mA (metal present) | < 1 mA (metal present) |
| Residual Current | --- | --- | --- | --- |
| Voltage Drop | --- | --- | --- | --- |
| Operation Led | --- | --- | --- | --- |
| Switching Frequency | 1000 Hz | 1000 Hz | 1000 Hz | 1000 Hz |
| Start Up Delay | --- | --- | --- | --- |
| Repeatability | < 3% | < 3% | < 3% | < 3% |
| Short Circuit Protection | Present (self-resetting) | Present (self-resetting) | Present (self-resetting) | Present (self-resetting) |
| Electric Protection | Against polarity reversal inductive loads | Against polarity reversal inductive loads | Against polarity reversal inductive loads | Against polarity reversal inductive loads |
| Temperature Limit | (-25 ... +60 °C) | (-25 ... +60 °C) | (-25 ... +60 °C) | (-25 ... +60 °C) |
| Protection Degree | IP67 | IP67 | IP67 | IP67 |
| Cable Length | --- | 2 m | --- | 2 m |
| Cable Section | --- | 2 x 0,25 mm ² | --- | 2 x 0,25 mm ² |
| Housing Material | Nickel-plated brass | Nickel-plated brass | Nickel-plated brass | Nickel-plated brass |
| Active face | LCP | LCP | LCP | LCP |
| Tightening torque | 30Nm | 30Nm | 30Nm | 30Nm |
| Weight - Cable Output | --- | 145g | --- | 145g |
| Weight - Connector Output | 95g | --- | 95g | --- |